

Description

Motor forward and reverse controller is used to control motor work status to make sure motor can be precisely controlled. Applicable to occasions where the motor control requirements are increased.

Features

Low power consumption
Long work time
Automatic control
Support DC motor forward and reverse
Support Limit operation
Work output LED indicator
Support Self-locking Mode

Parameters

Work voltage: DC 4V-40V
Work mode: Trigger mode
Work Temperature: -40°C~85°C
Work Humidity: 0%~95%RH
Size: 83*46*17mm

Function toggle

1: Press button 'K1' motor forward rotation. Then stop if press button 'SW1'. Motor reverse rotation if press button 'K2'.
2: Press button 'K2' motor reverse rotation. Then stop if press button 'SW2'. Motor forward rotation if press button 'K1'.

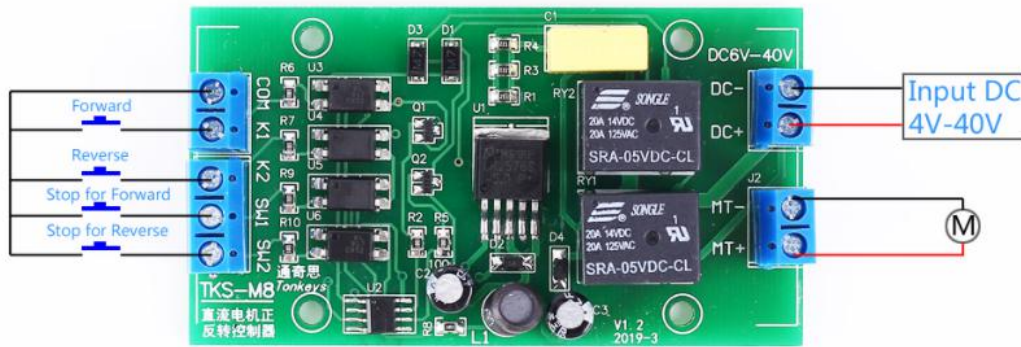
Momentary function

Press button 'K1' motor forward rotation. Then stop If you let go of your hand, the motor will stop rotating.
Press button 'K2' motor reverse rotation. Then stop If you let go of your hand, the motor will stop rotating.

Application: Toy, Intelligent robot control, Smart car, Curtain, Mechanical control

About power

The maximum current under 12V voltage is 20A, and when the voltage is 24V, the maximum current is 10A. The maximum drive motor power generally does not exceed 80W, and it is recommended that the locked-rotor motor of the motor prevail.



1.1>.Press button 'K1' motor forward rotation.

1.2>.Then stop if press button 'SW1'.

1.3>.Motor reverse rotation if press button 'K2'.

2.1>.Press button 'K2' motor reverse rotation.

2.2>.Then stop if press button 'SW2'.

2.3>.Motor forward rotation if press button 'K1'.