

Specification:

Voltage: DC6V, DC12V, DC24V

No-Load Speed: 6rpm, 10rpm, 18rpm, 23rpm, 30rpm, 40rpm, 90rpm, 150rpm

Error: $\pm 10\%$

Output Shaft Diameter: 6mm D-type

Output Shaft Length: 14mm

Gearbox Size:46*32*25mm

Gearbox Size Detal, please see the table

Wirings:

Red Wire - positive power supply of motor(+)

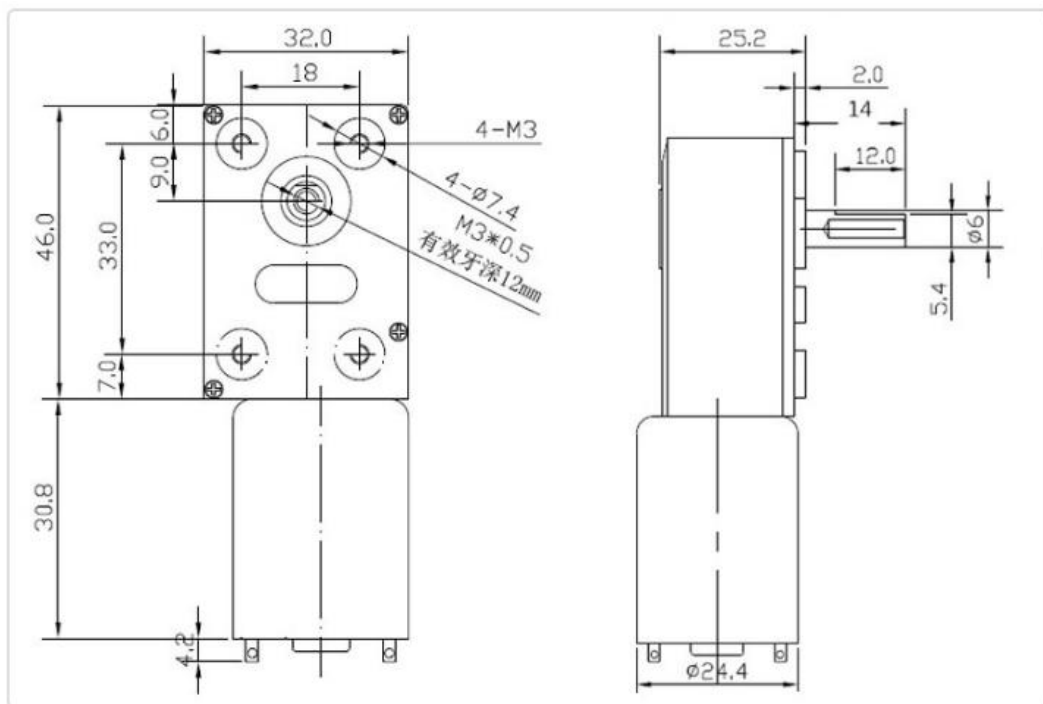
Black Wire - negative power supply of motor(-) Green Wire - negative power supply of encoder(-) (positive and negative power supply of encoder do not allow connect wrong; Blue Wire - positive power supply of encoder(+)
(positive and negative power supply of encoder do not allow connect wrong,(5-12v) Yellow Wire - signal
feedback (11 signals per motor turns a

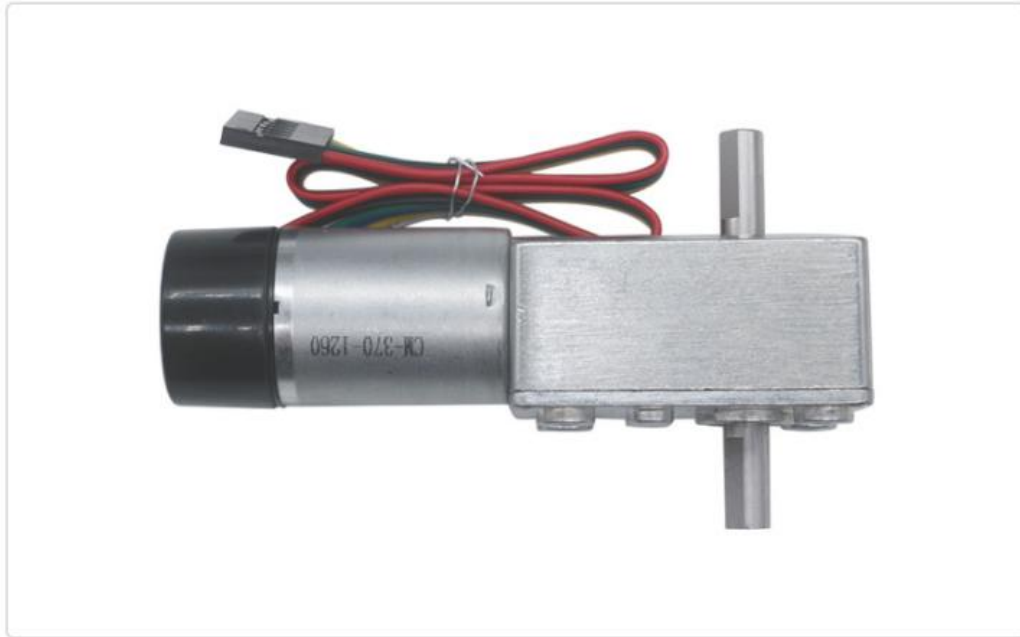
| Reduction ratio | Rated Volt | No Load | | AT Load | | | STALL | |
|-----------------|------------|--------------|---------------|-----------------|--------------|--------------|-----------------|--------------|
| | | SPEED RPM | CURRENT mA | Torque KG.cm | SPEED RPM | Current A | TOGQCE KG.CM | CURRENT A |
| 40 | 6 | 150 | 100 | 0.6 | 100 | 0.6 | 1 | 1.8 |
| 65 | 6 | 90 | 100 | 0.9 | 70 | 0.6 | 1.5 | 1.8 |
| 150 | 6 | 40 | 100 | 2 | 30 | 0.6 | 3.4 | 1.8 |
| 200 | 6 | 30 | 100 | 2.7 | 22 | 0.6 | 4.6 | 1.8 |
| 260 | 6 | 23 | 100 | 3.6 | 17 | 0.6 | 6 | 1.8 |
| 340 | 6 | 18 | 100 | 4.8 | 13 | 0.6 | 8 | 1.8 |
| 600 | 6 | 10 | 100 | 8 | 7 | 0.6 | 14 | 1.8 |
| 1000 | 6 | 6 | 100 | 14 | 4 | 0.6 | 24 | 1.8 |
| 40 | 12 | 150 | 60 | 0.8 | 100 | 0.5 | 1.4 | 1.3 |
| 65 | 12 | 90 | 60 | 1.3 | 70 | 0.5 | 2.3 | 1.3 |
| 150 | 12 | 40 | 60 | 3 | 30 | 0.5 | 5.3 | 1.3 |
| 200 | 12 | 30 | 60 | 4 | 22 | 0.5 | 7 | 1.3 |
| 260 | 12 | 23 | 60 | 5.2 | 17 | 0.5 | 9 | 1.3 |
| 340 | 12 | 18 | 60 | 6.8 | 13 | 0.5 | 12 | 1.3 |
| 600 | 12 | 10 | 60 | 12 | 7 | 0.5 | 21 | 1.3 |
| 1000 | 12 | 6 | 60 | 21 | 4 | 0.5 | 35 | 0.6 |
| 40 | 24 | 150 | 60 | 1.1 | 100 | 0.2 | 1.8 | 0.6 |
| 65 | 24 | 90 | 60 | 1.8 | 70 | 0.2 | 2.9 | 0.6 |
| 150 | 24 | 40 | 60 | 4.1 | 30 | 0.2 | 6.7 | 0.6 |
| 200 | 24 | 30 | 60 | 5.5 | 22 | 0.2 | 9 | 0.6 |
| 260 | 24 | 23 | 60 | 7.1 | 17 | 0.2 | 11.7 | 0.6 |
| 340 | 24 | 18 | 60 | 9 | 13 | 0.2 | 15 | 0.6 |
| 600 | 24 | 10 | 60 | 16 | 7 | 0.2 | 26 | 0.6 |
| 1000 | 24 | 6 | 60 | 23 | 4 | 0.2 | 35 | 0.6 |

c

ircle)

White Wire - signal feedback (11 signals per motor turns





Applications:

| Applications | | | | | | | | | |
|----------------------------|-------------------|-----------------|-------------------|--|--|--|----------------|-------------------|--|
| | | | | | | | | | |
| | | | | | | | | | |
| | | | | | | | | | |
| <p>Drink</p> | <p>Robot</p> | <p>Barbecue</p> | <p>Smart Home</p> | | | | | | |
| <p>Vending</p> | | | | | | | <p>Printer</p> | | |
| <p>Advertising machine</p> | <p>Smart Lock</p> | <p>Hood</p> | | | | | | <p>Camera PTZ</p> | |

