

220V 10A 1channel 1CH wireless remote control system

Item specifics

Features:high quality

Switch Type:Remote Control

Model Number:220v-1

Item Type:Switches

Channel:1CH

Output State:Non-Latched/Latched/Self-Latched adjustable

how to learn remote control:by the button on the receiver

work with which kind remote control:learning code and fixed code remote control

Code:Learning Code

Voltage:220V

Product Description

Receiver (switch)

Working Voltage : 220V

Max load current : 10A

Working Frequency : 315MHZ

please notice that here is in set , we have made it work together before we ship to you , so you don't have to care about what frequency are they .only someone who buy the receiver or transmitter alone ,he must care about the frequency to match .

Receiver sensitivity: : -105Db

Working temperature : -10'C - +60'C

Output way : Jog .Inter-lock .Self -lock is Adjustable

Code type :Learning code

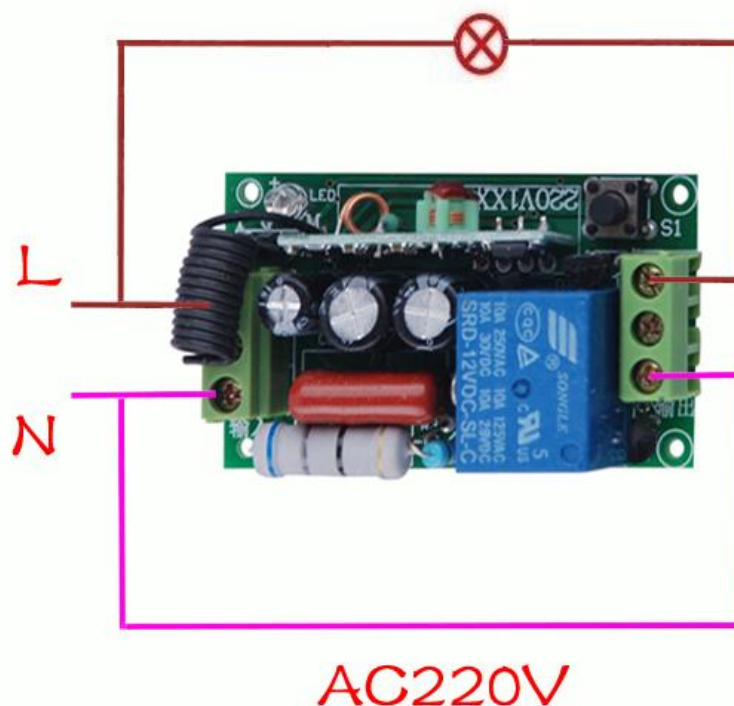
Transmitting distance:20-100M

working/output way

Jog/Non-Latched: press one button is working /ON. loosen your finger on the same button is stop/OFF .one channel switch need one buttons remote control

Self -lock/Self-Latched: press one button for one time is working/ON .press the same button again is stop/OFF .(one channel switch need one buttons remote control

Inter-lock /Latched : press one button is working/ON ,press another button is stop/OFF . (one channel switch need 2 buttons remote control



PCB Size:55*32*17mm

